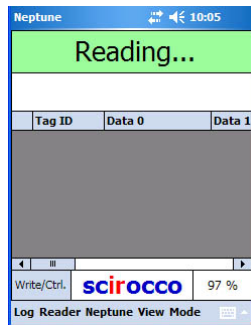
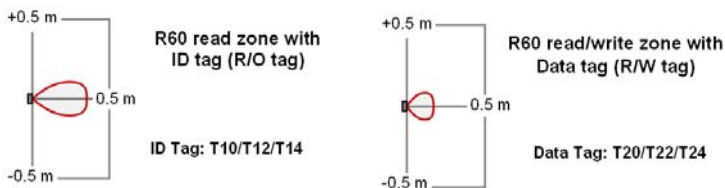


Reader R60



- Easy to read/write
- 30 cm reading, 20 cm writing
- CF card Type 1 design
- PDA software Neptune included

Typical Performance



R60	ID Tag-S	ID Tag	Data Tag
Reading distance	30 cm	30 cm	20 cm
Writing distance			20 cm

Details about reading/writing distance, passage speed, tag orientation and more can be found in Technical Manual.

Technical Data

Interfaces	Compact Flash card Type 1
Reading zone	60° field of view
Input voltage and power consumption	2.7 – 3.3 Vdc, 1 W reading/writing, 0.01 W idling,
Dimensions	42.8 x 50.6 x 6.6 mm
Weight	10 g
Temperature	0 to +50 °C (operating)
Temperature	-40 to +85 °C (storage)
Humidity (IEC 60068)	95%, non-condensing
Protection class (IEC 60529)	IP 40
Vibration (IEC 68-2-29)	0.01 g ² /Hz, 0.5h x3 dir, 10-2000 Hz
Immunity (EN 61000-6-2)	10/3 V/m, 4/8 kV ESD, 1kV transient
Emission (EN 61000-6-3)	30/37 dBuV/m @ 10m
LED safety (EN 60825-1)	Class 1, safe in all reasonable conditions
Cover	Polycarbonate
Label	Type code, software version, regulatory marking, serial number

Ordering codes

Reader Libeccio	R60
-----------------	-----

DSR60F

In a continuing effort to improve our products, Scirocco AB reserves the right to change specifications and features without prior notice.